



EQUILIBRATRICI
WHEEL BALANCERS

TOUCH MEC 1000

TOUCH MEC 1000 SONAR

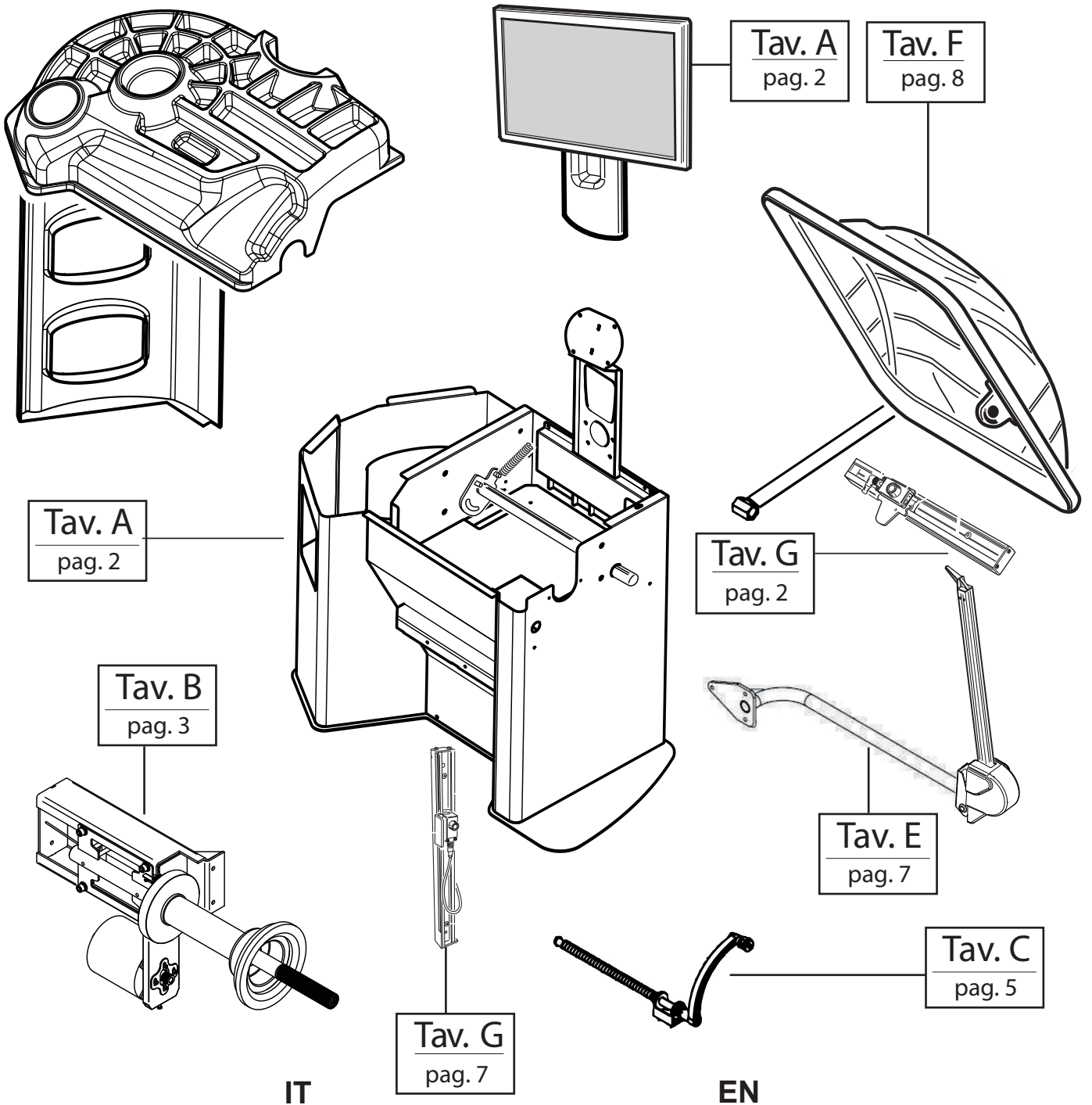
TOUCH MEC 1000-P RLC SONAR

Rev. 3 11/2019



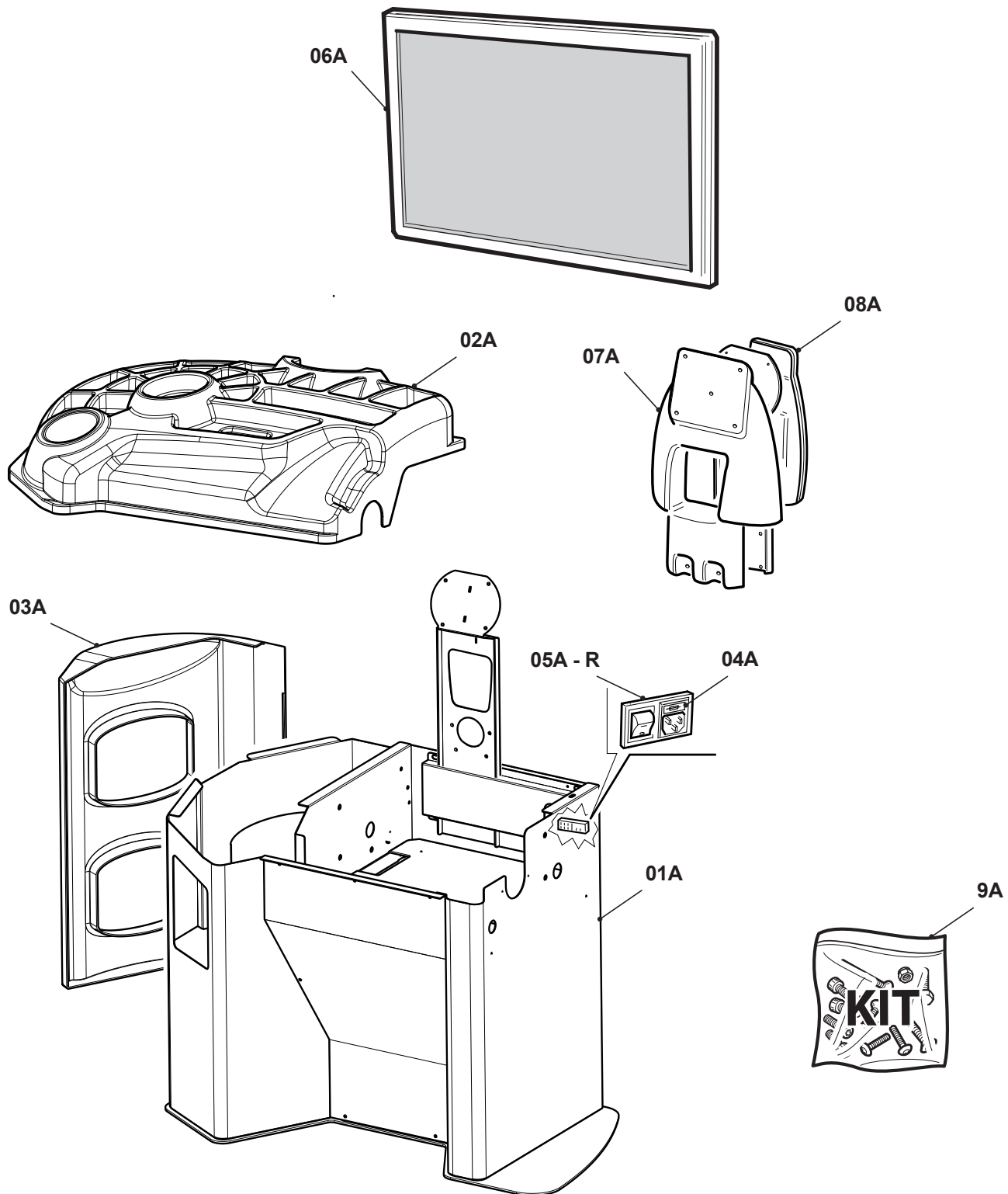
Catalogo ricambi
Spare parts list

IT-EN



Sul presente documento sono stati evidenziati con la lettera "R" i ricambi consigliati.

In this document, the recommended spare parts have been highlighted with letter "R".

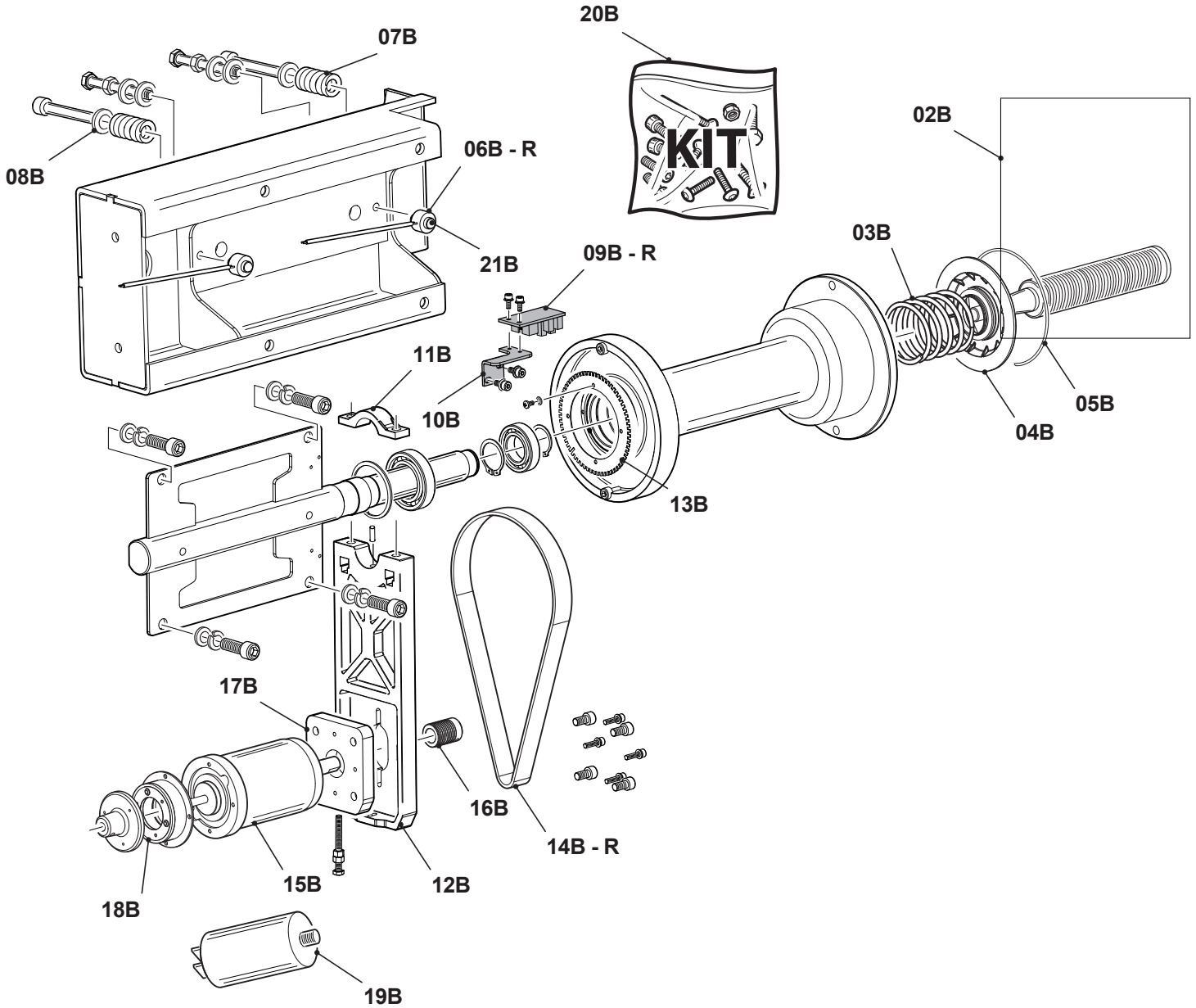


Rif.	Codice/Code	Descrizione	Description	Q.ty	
01A	41200182	Cassone *	Body *	1	
02A	41200080	Portapesi	Lid	1	
03A	41200081	Fianco sx TOUCH SCREEN	Left side TOUCH SCREEN	1	
04A	41100159	Fusibile 16 A 5X20 6,3A	16 A fuse	1	Vers.220V/50Hz
05A	41200187	Fusibile vetro 5x20 CSA	16 A fuse	2	Vers.110V/60Hz
05A	21200318	Interruttore alimentazione + spina MEC	Switch and plug	1	R
06A	41200098	Monitor TS	TS Monitor	1	
07A	41200055	Coperchio supp. monitor ant. *	Front cover *	1	
08A	41200056	Coperchio supp. Monitor post. *	Back cover *	1	
09A	21200480	Kit bulloneria	Bolts kit	1	

* SPECIFICARE COLORE / SPECIFY THE COLOR

TAV. B

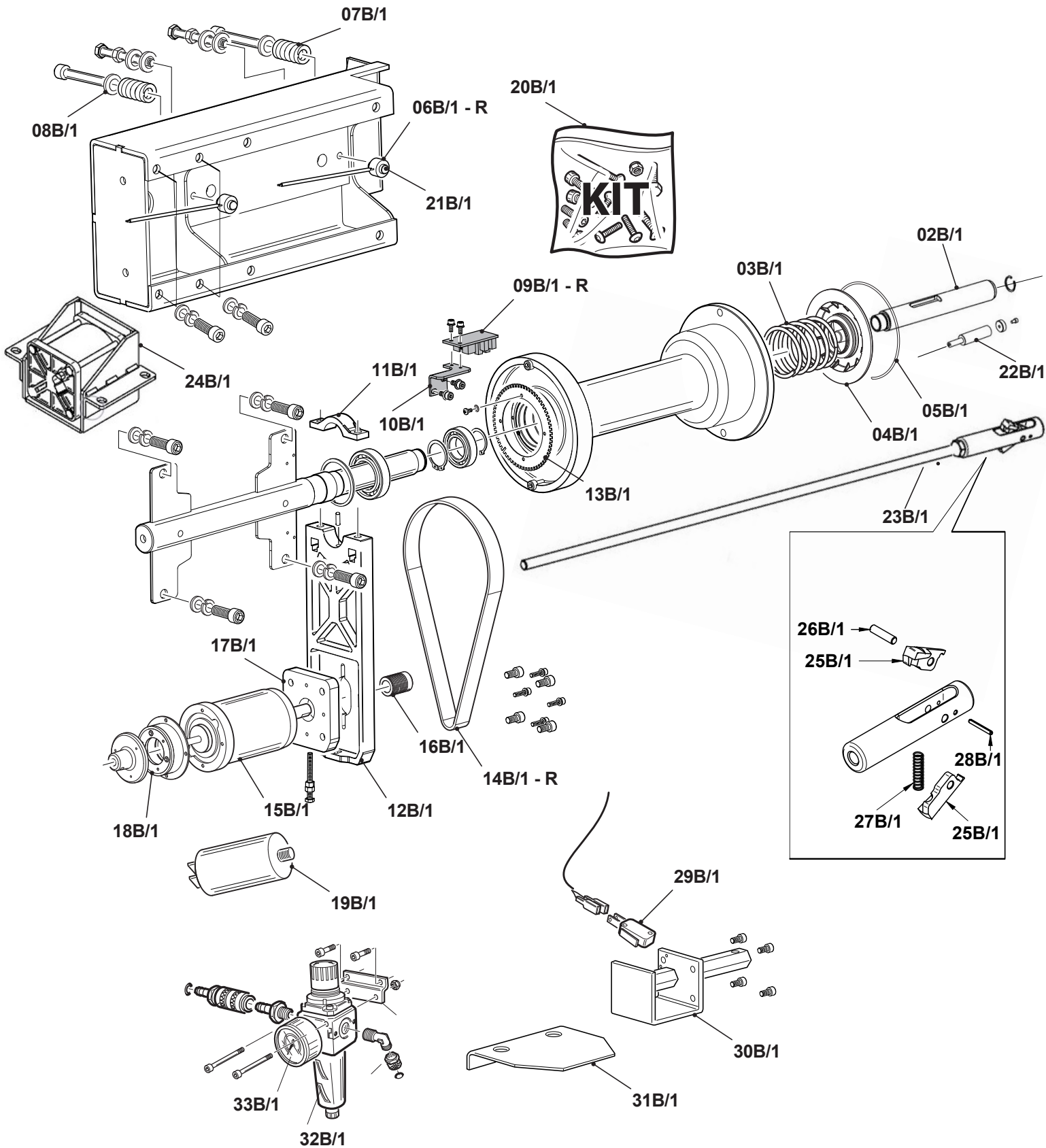
01B - Gruppo oscillante/
01B - Mechanical Group



Rif.	Codice	Descrizione	Description	Q.ty	
01B	41200540	Gruppo mecc. ass. + motore 220V	Mechanical group 220V	1	
01B	41200613	Gruppo mecc. ass. + motore 110V	Mechanical group 110V	1	
02B	41200279	Mozzo filettato cilindrico MEC	MEC Cylindrical Threaded pin	1	
03B	41200299	Molla conica campana MEC	Spring	1	
04B	41200298	Disco molla campana MEC	Ring disc	1	
05B	41200300	Anello elastico molla campana mec	Elastic ring	1	
06B	21200442	Pick-up	Pick-up	2	R
07B	41200321	Molla compressione pick-up	Pick-up compression spring	2	
08B	21200463Z31	Rondella molla compressione pick-up	Compression spring washer	2	
09B	41200350	Scheda Encoder	Encoder board	1	R
10B	41200261	Supporto scheda encoder mec	Encoder board support	1	
11B	41200315Z31	Collarino fermo motore ZB	Motor support	1	
12B	21201053	Staffa fermo motore	Motor locking plate	1	
13B	41200308	Disco Encoder mec znt	Encoder disk	1	
14B	21200407	Cinghia	Belt	1	R
15B	21200495	Motore 1PH 220V 50HZ	1PH 220V 50HZ motor	1	A partire da/from 06/2019
15B	21200496	Motore 1PH 110V 60HZ	1PH 110V 60HZ motor	1	A partire da/from 06/2019
16B	21200420	Puleggia motore MEC	MEC Motor pulley mec	1	fino a /to 06/2019
17B	41200329	Piastra supporto motore MEC	MEC Motor support plate	1	
18B	41200336	Freno elettromagnetico	Electromagnetic brake	1	
19B	41200637	Condensatore 12,5mF	Condenser 12,5mF	1	
19B	41200638	Condensatore 10mF vers. 220 V 60Hz	Condenser 10mF vers. 220 V 60Hz	1	
20B	21200435	Kit bulloneria gruppo meccanico	Mechanical group bolts kit	1	
21B	41200337	Sfera pick-up	Pick-up ball	4	

TAV. B/1

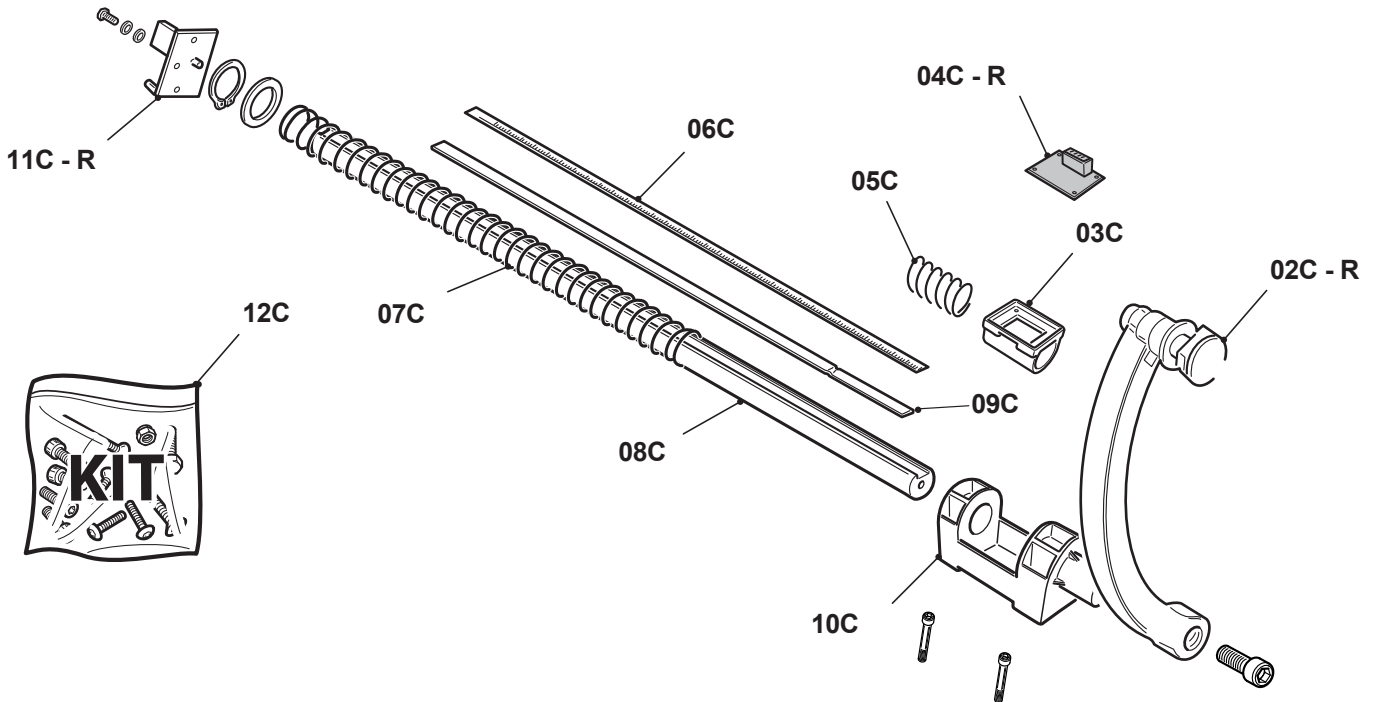
01B/1 - Gruppo oscillante NLS
01B/1 - NLS Mechanical Group



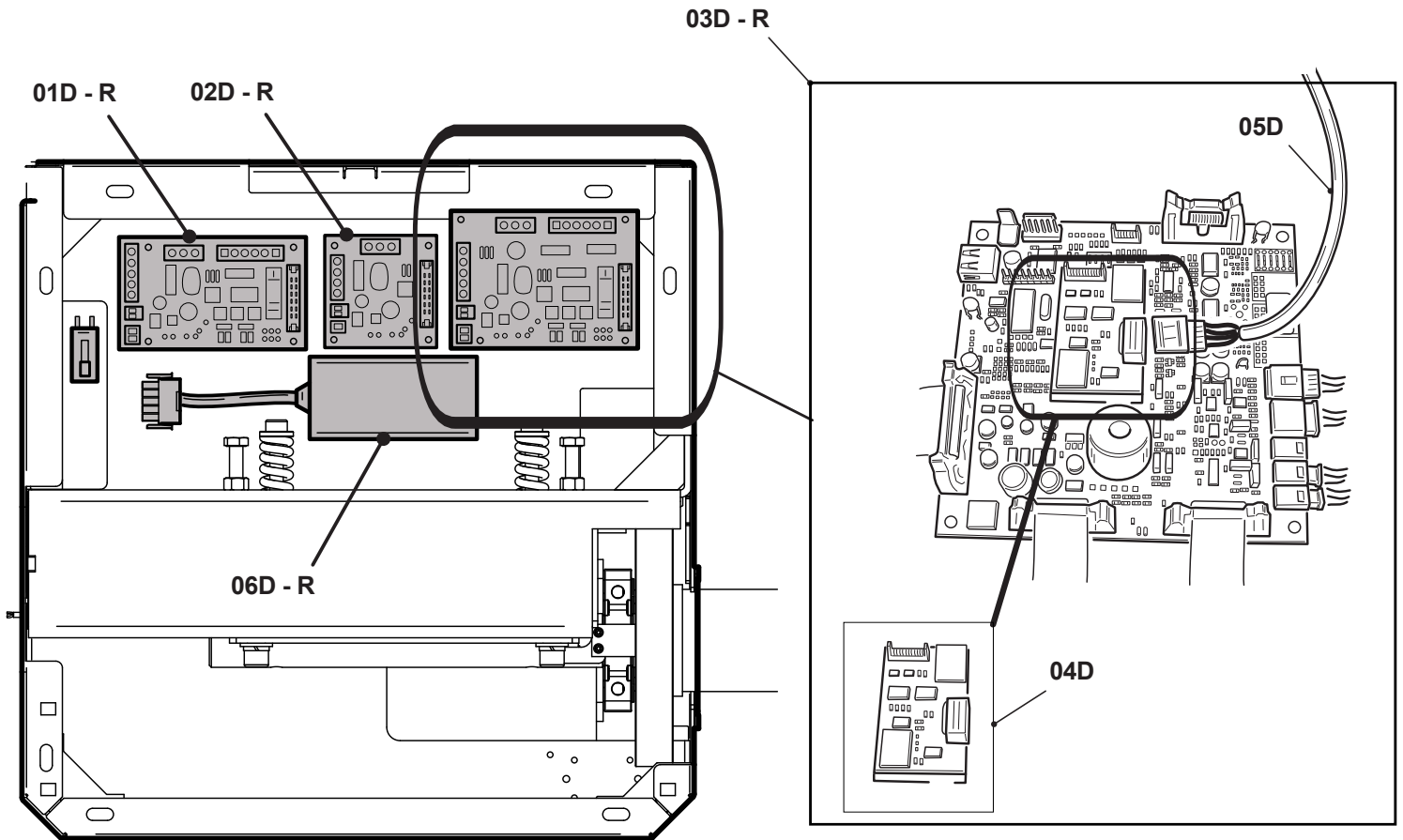
**01B/1 - Gruppo oscillante NLS
01B/1 -NLS Mechanical Group**

Rif.	Codice	Descrizione	Description	Q.ty	
01B/1	41200590	Gruppo mecc. ass. + motore 220V	Mechanical group 220V	1	
01B/1	41200646	Gruppo mecc. ass. + motore 110V	Mechanical group 110V	1	
02B/1	21100078	Mozzo NLS	NLS pin	1	
03B/1	41200299	Molla conica campana MEC	Spring	1	
04B/1	41200298	Disco molla campana MEC	Ring disc	1	
05B/1	41200300	Anello elstico molla campana mec	Elastic ring	1	
06B/1	21200442	Pick-up	Pick-up	2	R
07B/1	41200321	Molla compressione pick-up	Pick-up compression spring	2	
08B/1	21200463231	Rondella molla compressione pick-up	Compression spring washer	2	
09B/1	41200350	Scheda Encoder	Encoder board	1	R
10B/1	41200261	Supporto scheda encoder mec	Encoder board support	1	
11B/1	41200315231	Collarino fermo motore ZB	Motor support	1	
12B/1	21201053	Staffa fermo motore	Motor locking plate	1	
13B/1	41200308	Disco Encoder mec znt	Encoder disk	1	
14B/1	21200407	Cinghia	Belt	1	R
15B/1	21200495	Motore 1PH 220V 50HZ	1PH 220V 50HZ motor	1	A partire da /from 06/2019
15B/1	21200496	Motore 1PH 110V 60HZ	1PH 110V 60HZ motor	1	A partire da /from 06/2019
15B/1	41200604	Motore inverter	Motore inverter	1	Solo per/only for Touch Mec 1000 -P RLC SONAR
16B/1	21200420	Puleggia motore MEC	MEC Motor pulley mec	1	fino a / to 06/2019
17B/1	41200329	Piastra supporto motore MEC	MEC Motor support plate	1	
18B/1	41200336	Freno elettromagnetico	Electromagnetic brake	1	
19B/1	41200637	Condensatore 12,5mF	Condenser 12,5mF	1	
19B/1	41200638	Condensatore 10mF vers. 220 V 60Hz	Condenser 10mF vers. 220 V 60Hz	1	
20B/1	21200435	Kit bulloneria gruppo meccanico	Mechanical group bolts kit	1	
21B/1	41200337	Sfera pick-up	Pick-up ball	4	
22B/1	21201078	Cilindro Azoto	Nitrogen Cylinder	1	
23B/1	41200641	Gruppo traino completo	Complete traction unit	1	
24B/1	41200643	Cilindro sblocco	Release cylinder	1	
25B/1	41200650	Linguetta traino	Traction tongue	2	
26B/1	41200651	Spina m6 Ø6x24 UNI 6364 A	Dowel m6 Ø6x24 UNI 6364 A	1	
27B/1	41200653	Molla	Spring	1	
28B/1	41200652	Spina Ø3x24 UNI 6873	Dowel Ø3x24 UNI 6873	1	
29B/1	21200351	Microinterruttore	Microswitch	1	
30B/1	21200338	Blocco pedale	NLS pedal unit	1	
31B/1	21200337	Pedale *	NLS pedal *	1	
32B/1	20100121	Filtro aria + regolatore di pressione	Air filter + pressure regulator	1	
33B/1	41100087	Manometro	Pressure gauge	1	

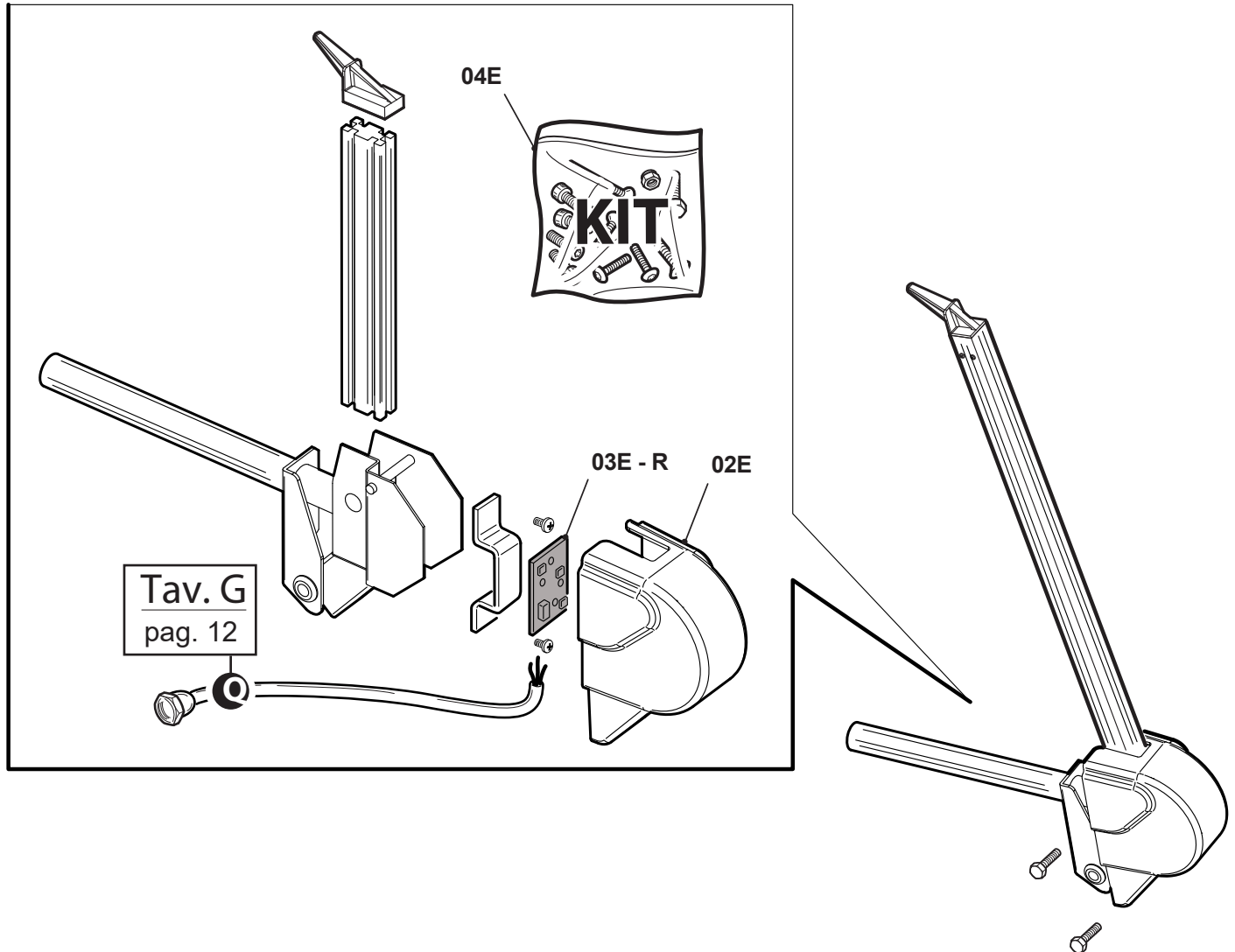
SPECIFICARE COLORE / SPECIFY THE COLOR



Rif.	Codice/Code	Descrizione	Description	Q.ty	
01C	41200431	Tastatore interno assemblato	Assembled internal sensor	1	
02C	21200481	Braccetto tastatore new completo	Complete sensor arm	1	R
03C	41200260	Supporto scheda potenziometro MEC	Potentiometer board support	1	
04C	41200349	Scheda potenziometro distanza	Potentiometer distance board	1	R - A partire da/ from 10/2017
04C	21200379	Scheda potenziometro distanza	Potentiometer distance board	1	R - Fino a / to 10/2017
05C	41200332	Molla compr. Br. Tast. Interno	Internal sensor spring	1	
06C	41200483	Adesivo scala graduata	Graduated scale	1	
07C	41200320	Molla compr. Asta tast. Int.	Spring	1	
08C	41200309	Asta alluminio anodizzato	Rod for internal sensor	1	
09C	41200600	Plastomagnete	Magnetic assembly	1	
10C	41200259	Supporto tastatore interno MEC	Support for internal sensor	1	
11C	41200348	Scheda accelerometro diametro	Accelerometer diameter board	1	R
12C	21200437	Kit bulloneria tastatore interno	Internal sensor bolts kit for	1	

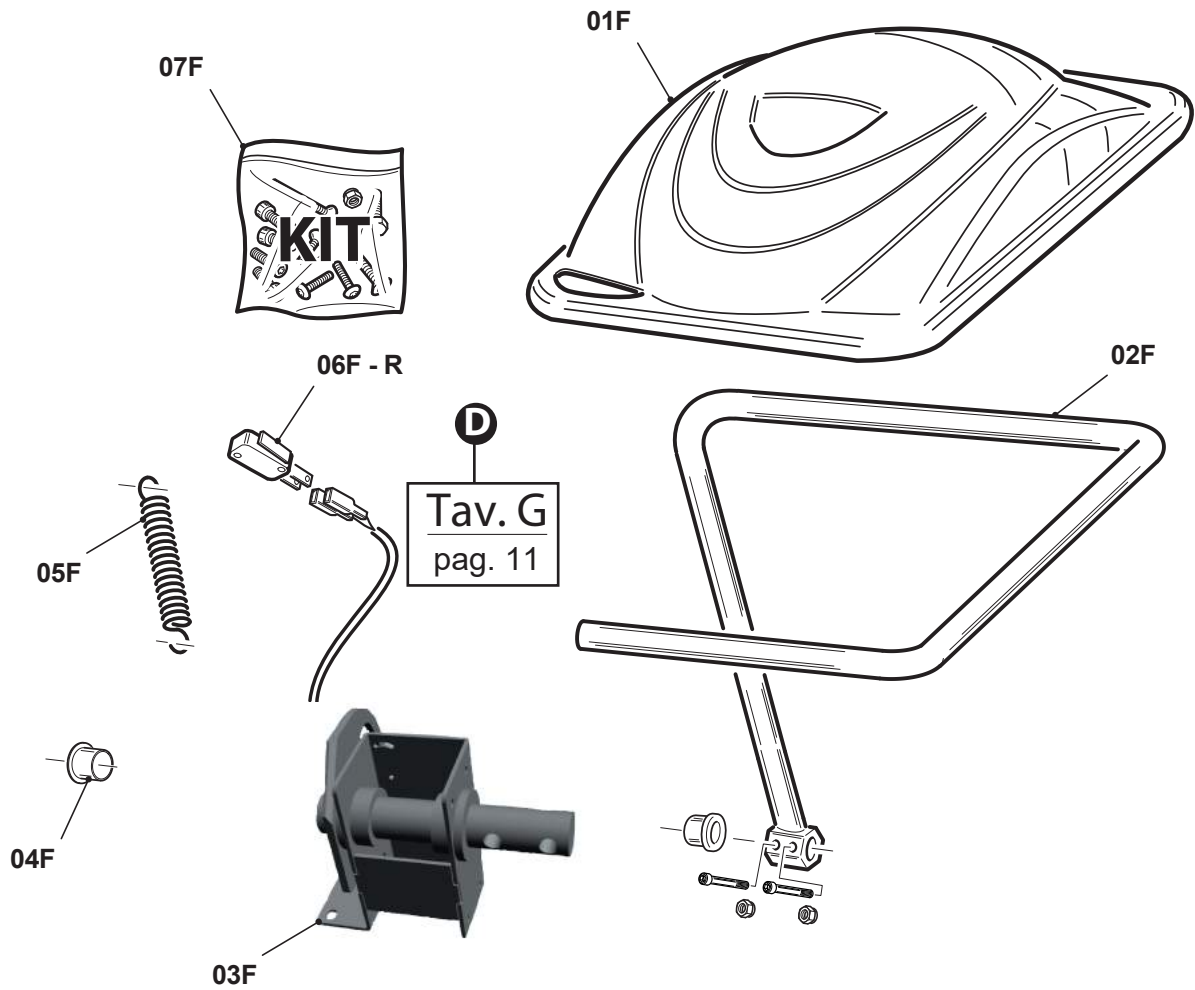


Rif.	Codice/Code	Descrizione	Description	Q.ty	
01D	21201019	Scheda Alimentazione	Power supply board	1	R
02D	21201001	Scheda GPB	GPB board	1	R
03D	21200497	Scheda CPU-LCD TS + SD Card	CPU-LCD T board + SD Card	1	R
04D	41200225	Scheda BTIX	BTIX Board	1	
05D	41200226	Cavo Ø 9 TOUCH MEC 1000	TOUCH MEC 1000 cable	1	
06D	21200324	Alimentatore	Power supply	1	R



Rif.	Codice	Descrizione	Description	Q.ty	
01E	21100055	Tastatore esterno + tubolare completo	External sensor + tubular	1	
02E	21200356	Carter tastatore esterno rosso MEC	External sensor cover	1	
03E	41200348	Scheda accelerometro diametro/distanza	Accelerometer diameter/distance board	1	R
04E	21200440	Kit bulloneria tastatore esterno	External sensor bolts kit	1	

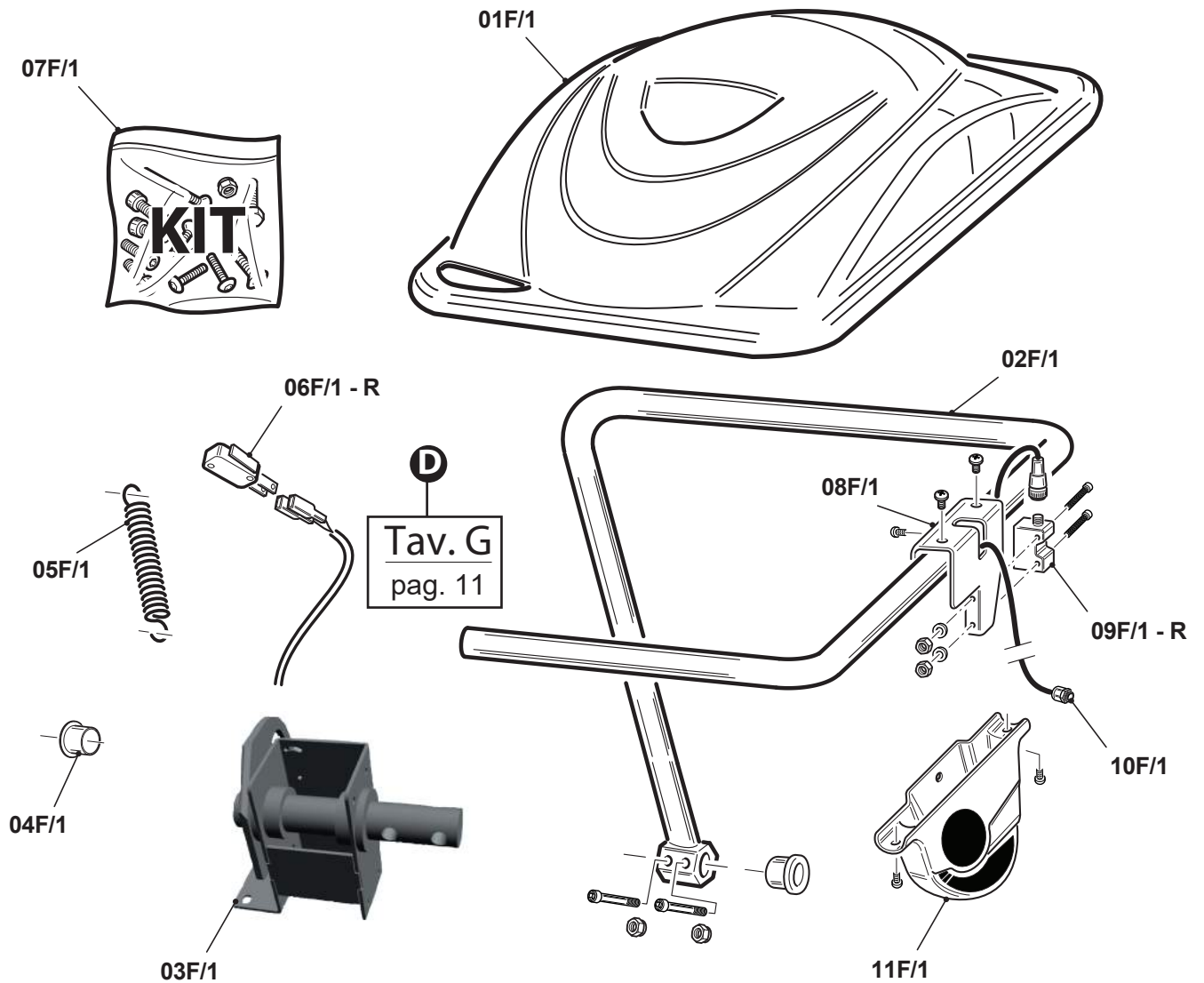
IN VIGORE DA 06/2015 / IN FORCE FROM 06/2015



Rif.	Code	Descrizione	Description	Q.ty	
01F	21200418	Carter copriruota MEC	MEC wheel guard	1	
02F	41200418V13	Tubo sostegno carter D30x2 nero new	Support tube D30x2 black new	1	
03F	41200433	Supporto tubolare MEC assemblato	MEC tubular support assembled	1	A partire da/from 09/2017
04F	41200262	Boccola tubo supporto carter mec	Bushing	2	
05F	21200327	Molla carter copriruota mec	Wheel guard spring	1	
06F	41200492	Microinterruttore MEC	Microswitch	1	R
07F	41200429	Kit bulloneria carter	Bolts kit	1	

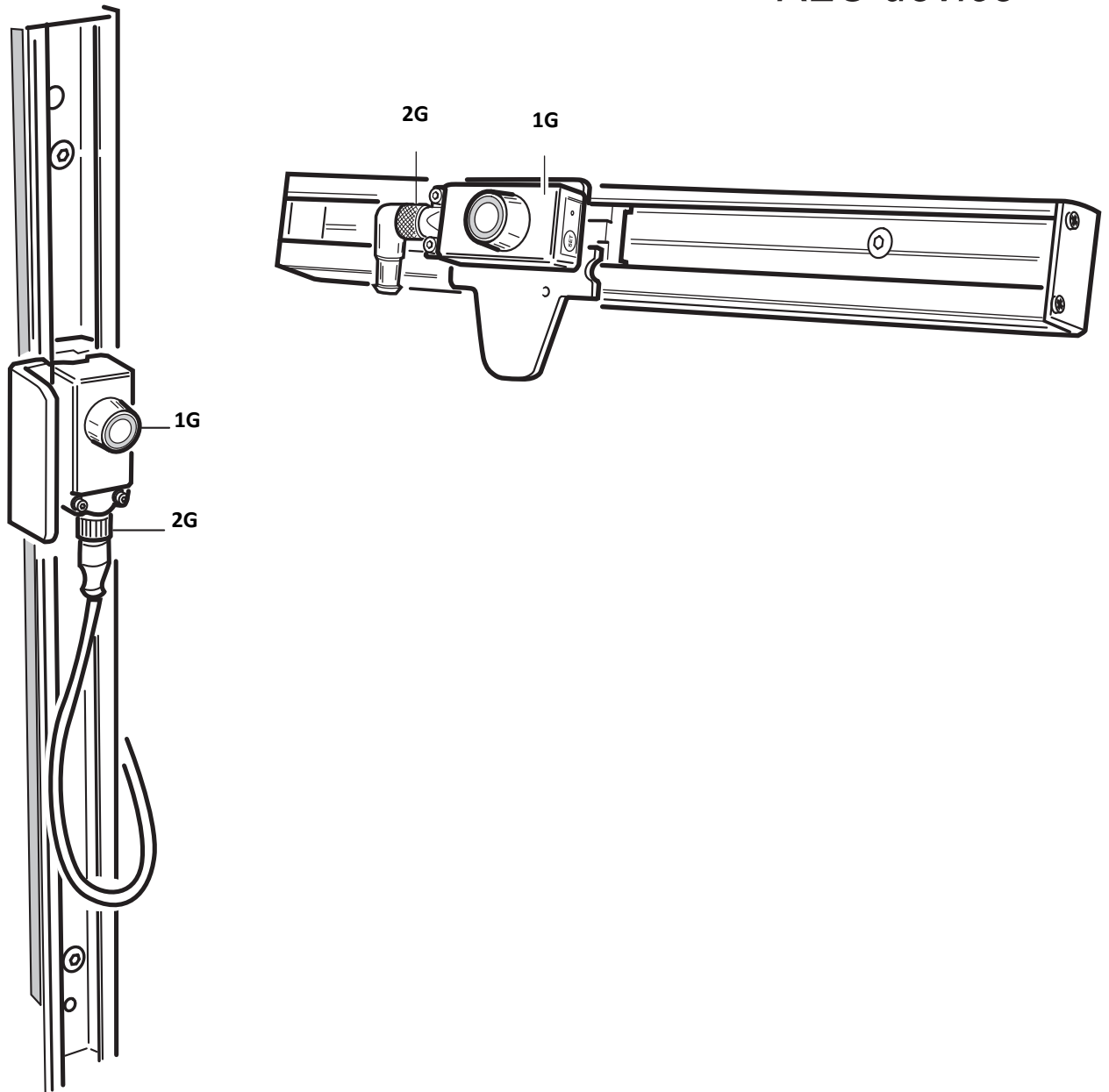
TAV. F/1

MEC con SONAR /
MEC with SONAR

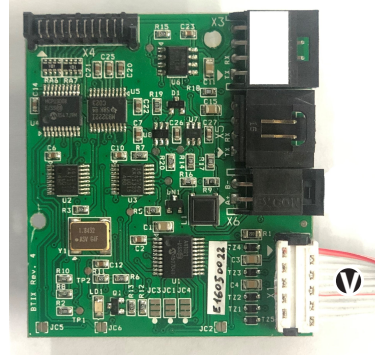
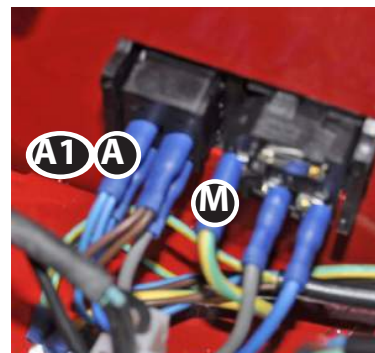
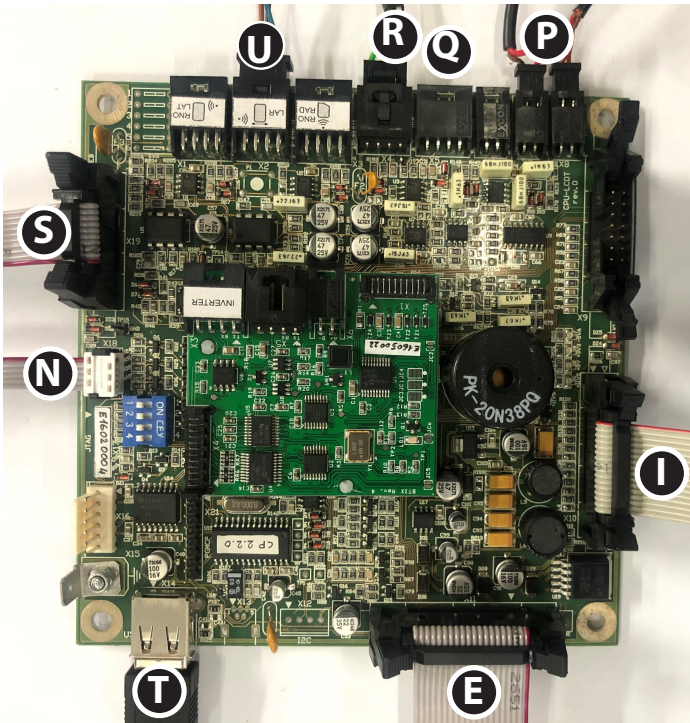
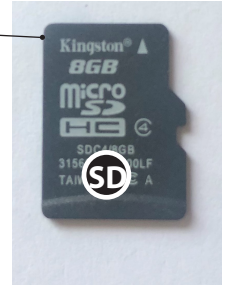
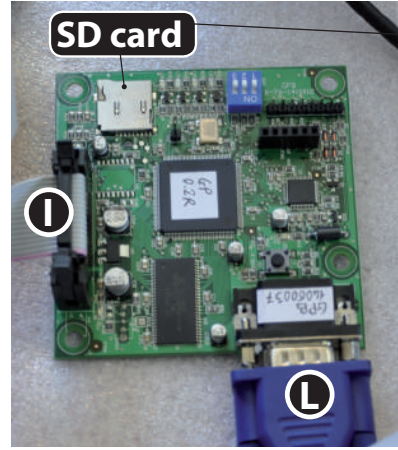


Rif.	Code	Descrizione	Description	Q.ty
01F/1	21200418	Carter copriruota MEC	MEC wheel guard	1
02F/1	41200418V13	Tubo sostegno carter D30x2 nero new	Support tube D30x2 black new	1
03F/1	41200433	Supporto tubolare MEC assemblato	MEC tubular support assembled	1
04F/1	41200262	Boccola tubo supporto carter mec	Bushing	2
05F/1	21200327	Molla carter copriruota mec	Wheel guard spring	1
06F/1	41200492	Microinterruttore MEC	Microswitch	1 R
07F/1	41200495	Kit bulloneria sonar MEC	Sonar Bolts kit	1
08F/1	41200325Z31	Lamiera sonar MEC ZB	Sonar support	1
09/F1	41200239	SONAR distanza MEC	Widht SONAR MEC	1 R
10F/1	41200240	Connettore + cavo SONAR MEC	SONAR MEC cable	1
11F/1	41200328	Carter copertura SONAR ABS	SONAR plastic cover	1

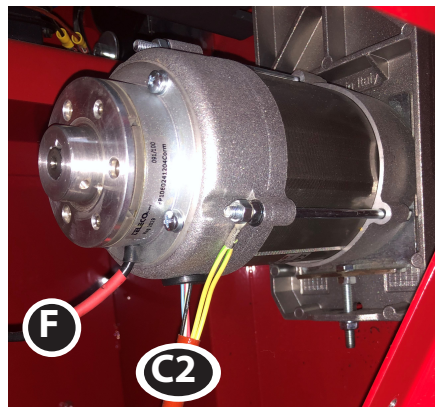
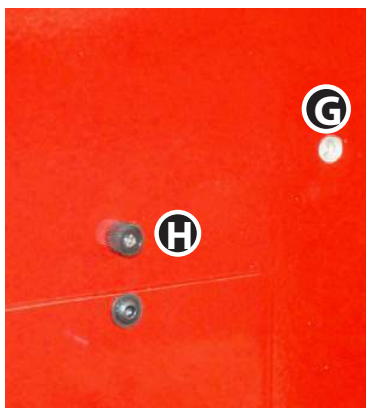
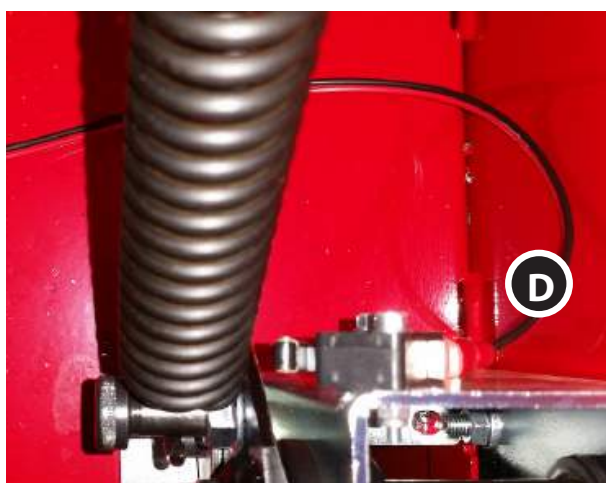
TAV. G
Dispositivo RLC/
RLC device



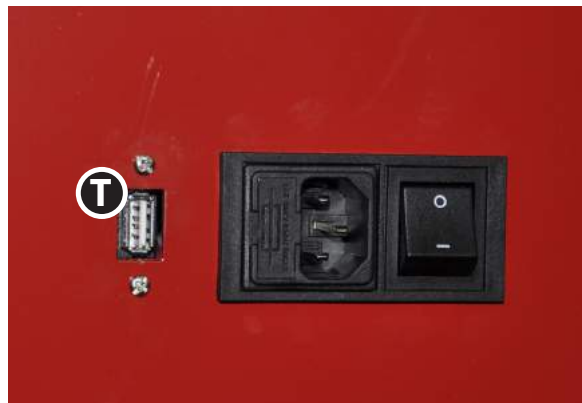
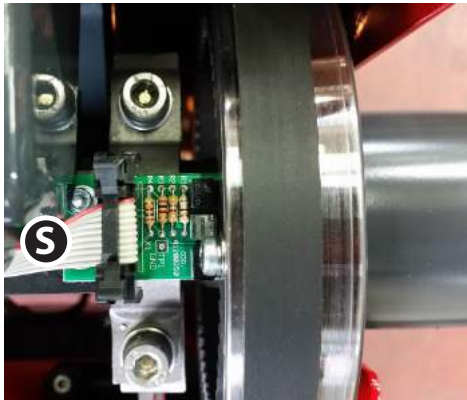
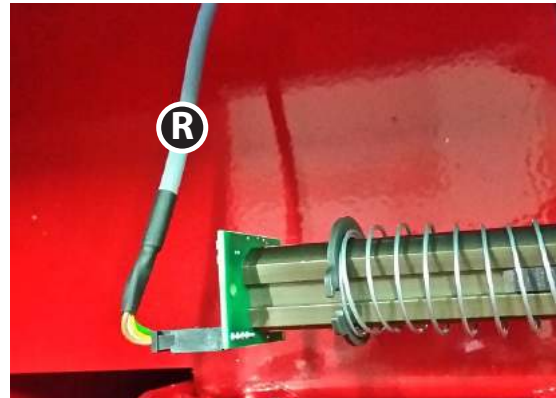
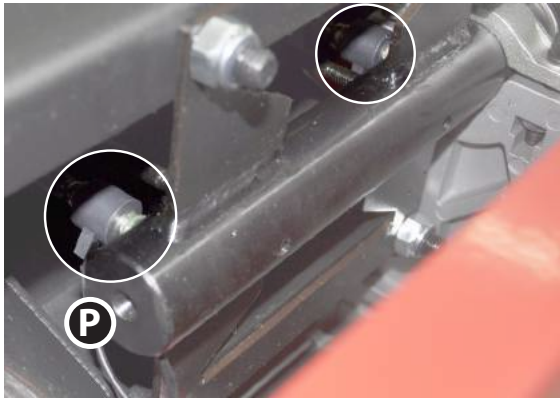
Rif.	Codice	Descrizione	Description	Q.ty
1G	41200239	Sonar	Sonar device	1
2G	41200240	Cavo sonar	Sonar cable	1



Rif.	Codice/Code	Descrizione	Description	Q.ty	
A	41200341	Cavo scheda alimentazione MEC	MEC power supply cable	1	
B	21200324	Alimentatore MEC	MEC power supply	1	R
C		Cavo motore + condensatore	Motor cable	1	
D	41100138	Cavo bicolore MICRO	Bicolor cable	1	
E	41200231	Cavo FLAT 43 cm. 20 poli	FLAT cable 43 cm.	1	
F	41200336	Freno elettromagnetico	Electromagnetic brake	1	
G	41200066	Illuminatore	Led light	1	
H	21200393	Laser	Laser	1	
I	41200232	Cavo FLAT 33.5 cm. 16 poli	FLAT cable 33.5 cm.	1	
L	41200536	Cavo VGA monitor	VGA Monitor cable	1	
M	21200333	Cavo messa a terra	Ground cable	1	
N	41200374	Cavo tastatore interno distanza	Distance internal sensor cable	1	R
P	21200442	Pick-up + cavo	Pick-up + cable	2	R
Q	41200372	Cavo tastatore esterno (se presente)	External sensor cable (if present)	1	R
R	41200373	Cavo tastatore interno diametro	Diameter internal sensor cable	1	R
S	41200375	Cavo scheda Encoder	Encoder board cable	1	
T	21200416	Cavo USB	USB cable	1	
U	41200240	Connettore + cavo SONAR MEC (se presente)	SONAR MEC cable (if present)	1	
V	41200226	Cavo monitor Touch	Touch monitor cable	1	
SD	21201048	SD card (Specificare la versione SW)	SD card (Specify the SW version)	1	

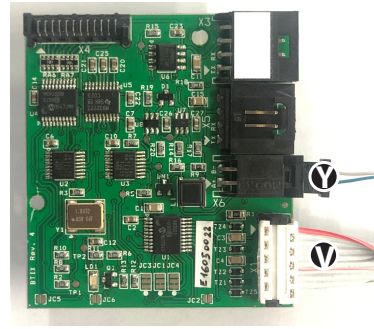
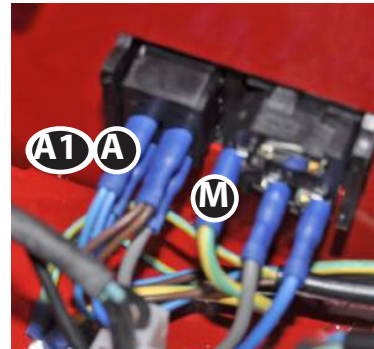
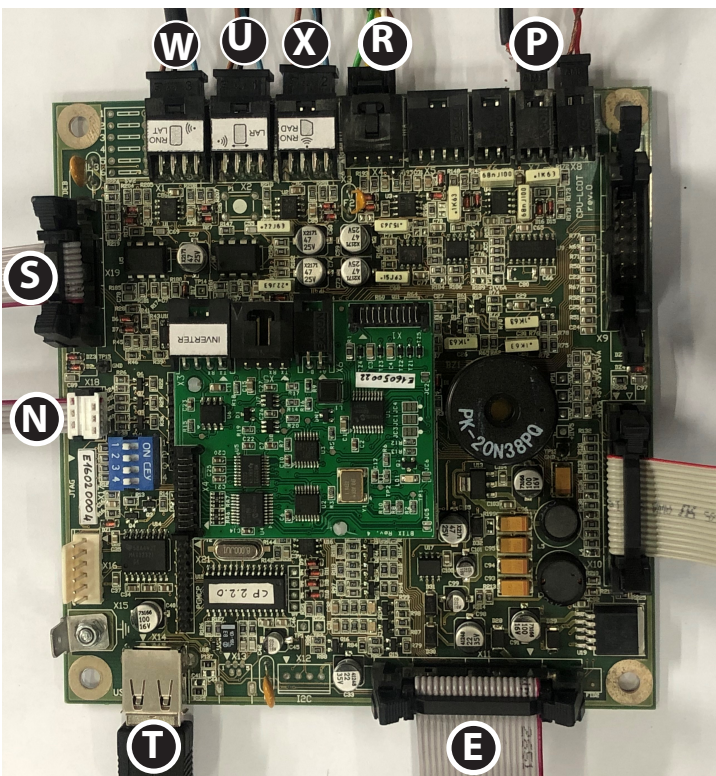
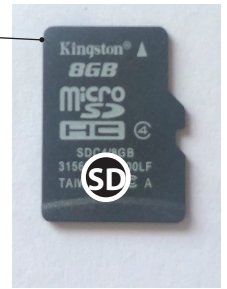
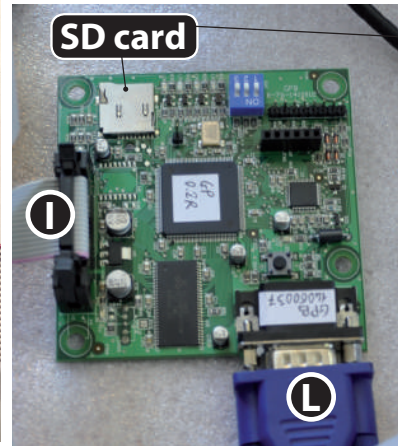
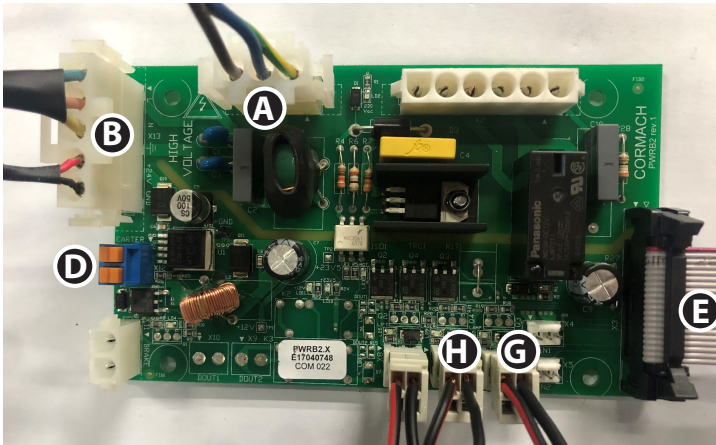


Rif.	Codice/Code	Descrizione	Description	Q.ty	
A1	23200074	Cavo alimentazione monitor	Monitor power supply	1	
B	21200324	Alimentatore MEC	MEC power supply	1	R
C1 - C2		Cavo motore + condensatore	Motor cable	1	
D	41100138	Cavo bicolore MICRO	Bicolor cable	1	
F	41200336	Freno elettromagnetico	Electromagnetic brake	1	
G	41200066	Illuminatore	Led light	1	
H	21200393	Laser	Laser	1	
L	41200536	Cavo VGA monitor	VGA Monitor cable	1	
U	41200240	Connettore + cavo Sonar MEC (se presente)	Sonar MEC cable (if present)	1	
V	41200226	Cavo monitor Touch	Touch monitor cable	1	

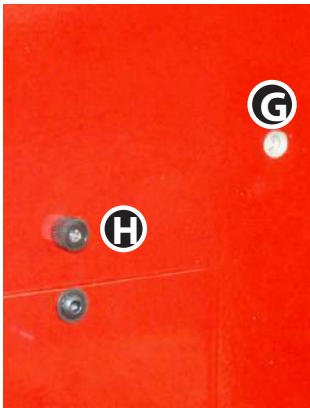
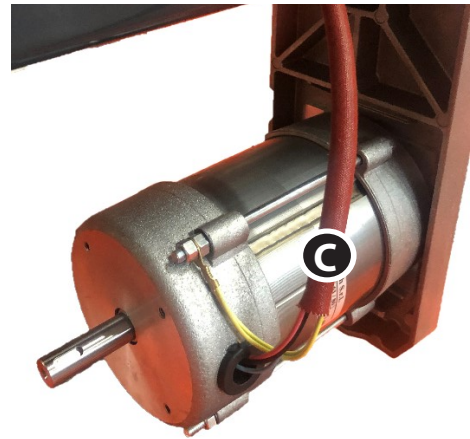
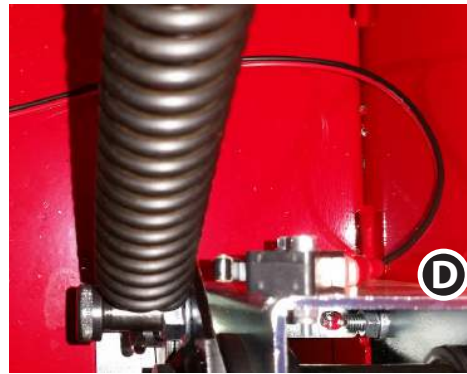


Rif.	Codice/Code	Descrizione	Description	Q.ty	
N	41200374	Cavo tastatore interno distanza	Distance internal sensor cable	1	R
P	21200442	Pick-up + cavo	Pick-up + cable	2	R
Q	41200372	Cavo tastatore esterno (se presente)	External sensor cable (if present)	1	R
R	41200373	Cavo tastatore interno diametro	Diameter internal sensor cable	1	R
S	41200375	Cavo scheda Encoder	Encoder board cable	1	
T	21200416	Cavo USB	USB cable	1	

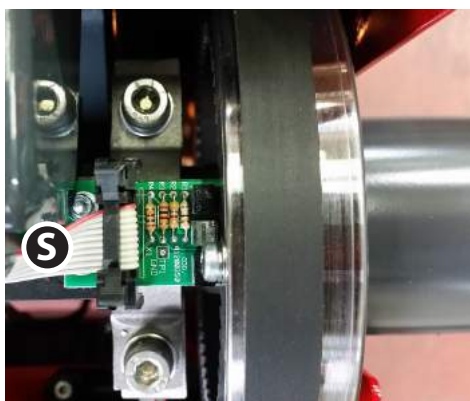
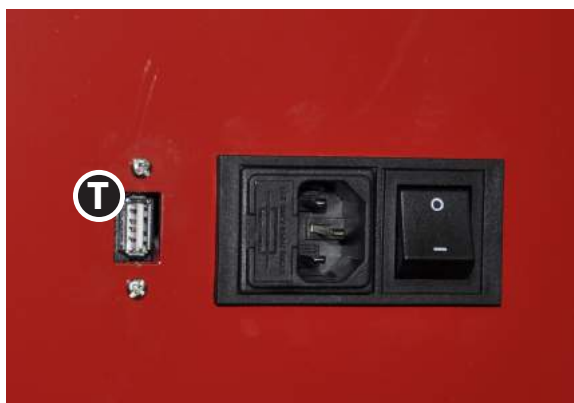
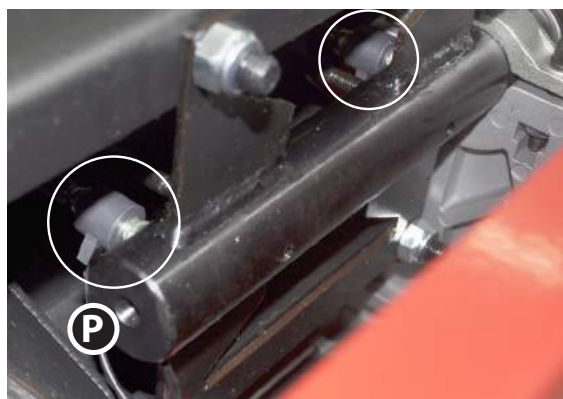
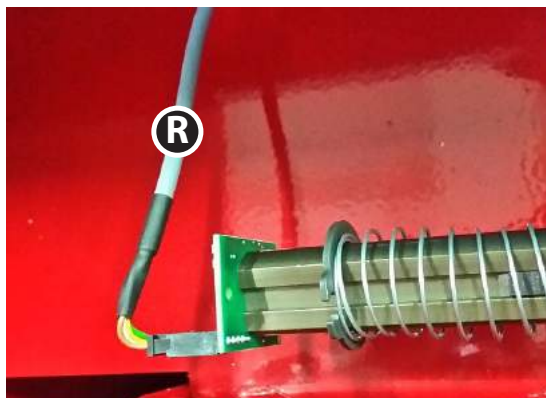
TOUCH MEC 1000-P RLC SONAR



Rif.	Codice/Code	Descrizione	Description	Q.ty
A	41200341	Cavo scheda alimentazione MEC	MEC power supply cable	1
B	21200324	Alimentatore MEC	MEC power supply	1 R
D	41100138	Cavo bicolore MICRO	Bicolor cable	1
E	41200231	Cavo FLAT 43 cm. 20 poli	FLAT cable 43 cm.	1
G	41200066	Illuminatore	Led light	1
H	21200393	Laser	Laser	1
I	41200232	Cavo FLAT 33.5 cm. 16 poli	FLAT cable 33.5 cm.	1
L	41200536	Cavo VGA monitor	VGA Monitor cable	1
M	21200333	Cavo messa a terra	Ground cable	1
N	41200374	Cavo tastatore interno distanza	Distance internal sensor cable	1 R
P	21200442	Pick-up + cavo	Pick-up + cable	2 R
R	41200373	Cavo tastatore interno diametro	Diameter internal sensor cable	1 R
S	41200375	Cavo scheda Encoder	Encoder board cable	1
T	21200416	Cavo USB	USB cable	1
U	41200240	Connettore + cavo Sonar MEC	Sonar MEC cable	1
V	41200226	Cavo monitor Touch	Touch monitor cable	1
W	41200240	Connettore + cavo sonar Run out Laterale	Sonar MEC cable Run out Lateral	1
X	41200240	Connettore + cavo sonar Run out Radiale	SONAR MEC cable Run out Radial	1
Y	41200330	Cavo inverter	Inverter cable	1
SD	21201048	SD card (Specificare la versione SW)	SD card (Specify the SW version)	1



Rif.	Codice/Code	Descrizione	Description	Q.ty
A1 -A2	23200074	Cavo alimentazione	Power supply cable	1
B	21200324	Alimentatore MEC	MEC power supply	1 R
C		Cavo motore	Motor cable	1
D	41100138	Cavo bicolore MICRO	Bicolor cable	1
G	41200066	Illuminatore	Led light	1
H	21200393	Laser	Laser	1
L	41200536	Cavo VGA monitor	VGA Monitor cable	1
U	41200240	Connettore + cavo Sonar MEC	Sonar MEC cable	1 R
V	41200226	Cavo monitor Touch	Touch monitor cable	1
W	41200240	Connettore + cavo sonar Run out Laterale	Sonar MEC cable Run out Lateral	1
X	41200240	Connettore + cavo sonar Run out Radiale	SONAR MEC cable Run out Radial	1
Y	41200330	Cavo inverter	Inverter cable	1
Z	41200305	Inverter	Inverter	1
Z1	41200477	Inverter 110 V	Inverter 110 V	1

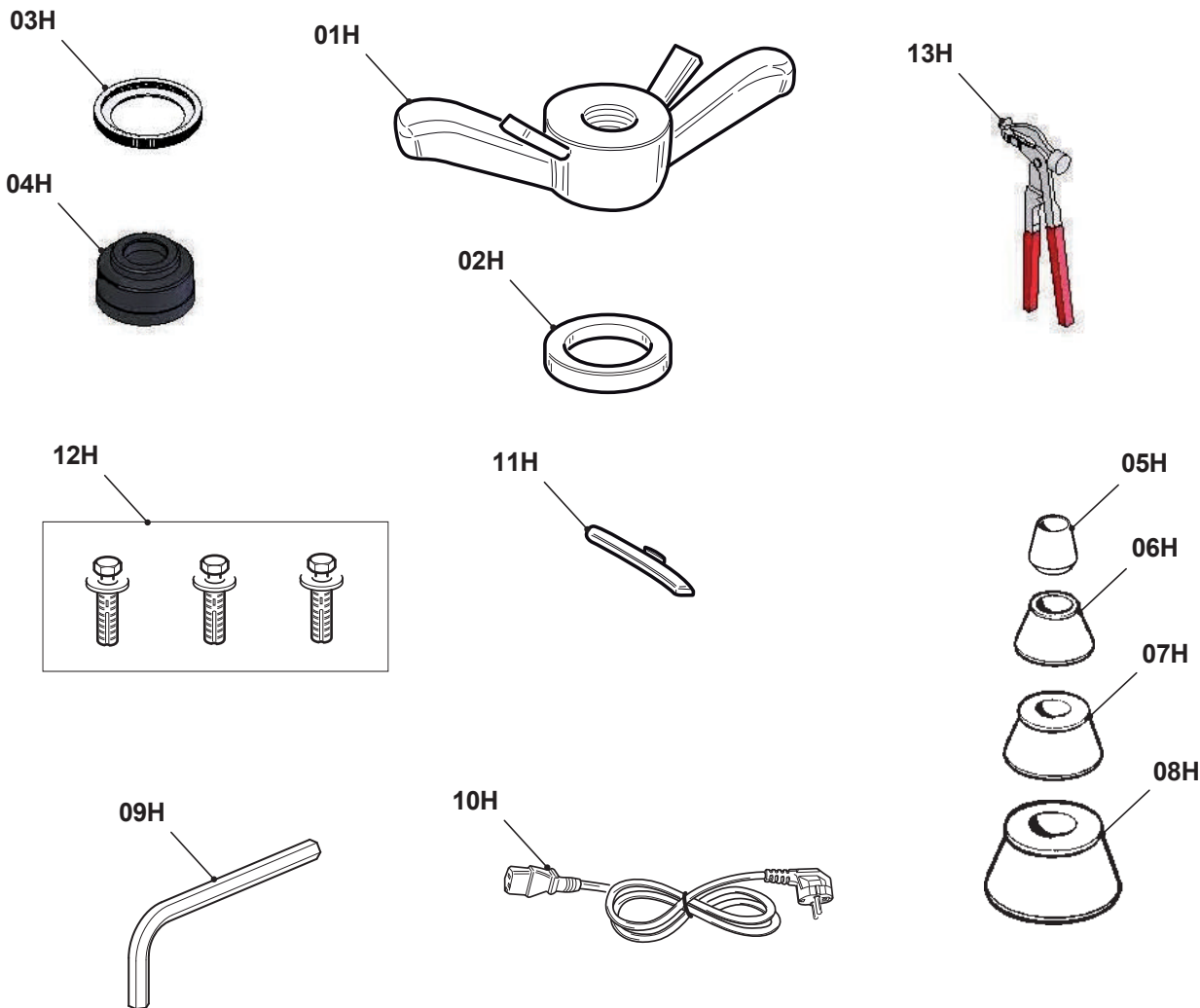


Rif.	Codice/Code	Descrizione	Description	Q.ty	
N	41200374	Cavo tastatore interno distanza	Distance internal sensor cable	1	R
P	21200442	Pick-up + cavo	Pick-up + cable	2	R
R	41200373	Cavo tastatore interno diametro	Diameter internal sensor cable	1	R
S	41200375	Cavo scheda Encoder	Encoder board cable	1	
T	21200416	Cavo USB	USB cable	1	

SOLO con SISTEMA NLS / ONLY with NLS SYSTEM

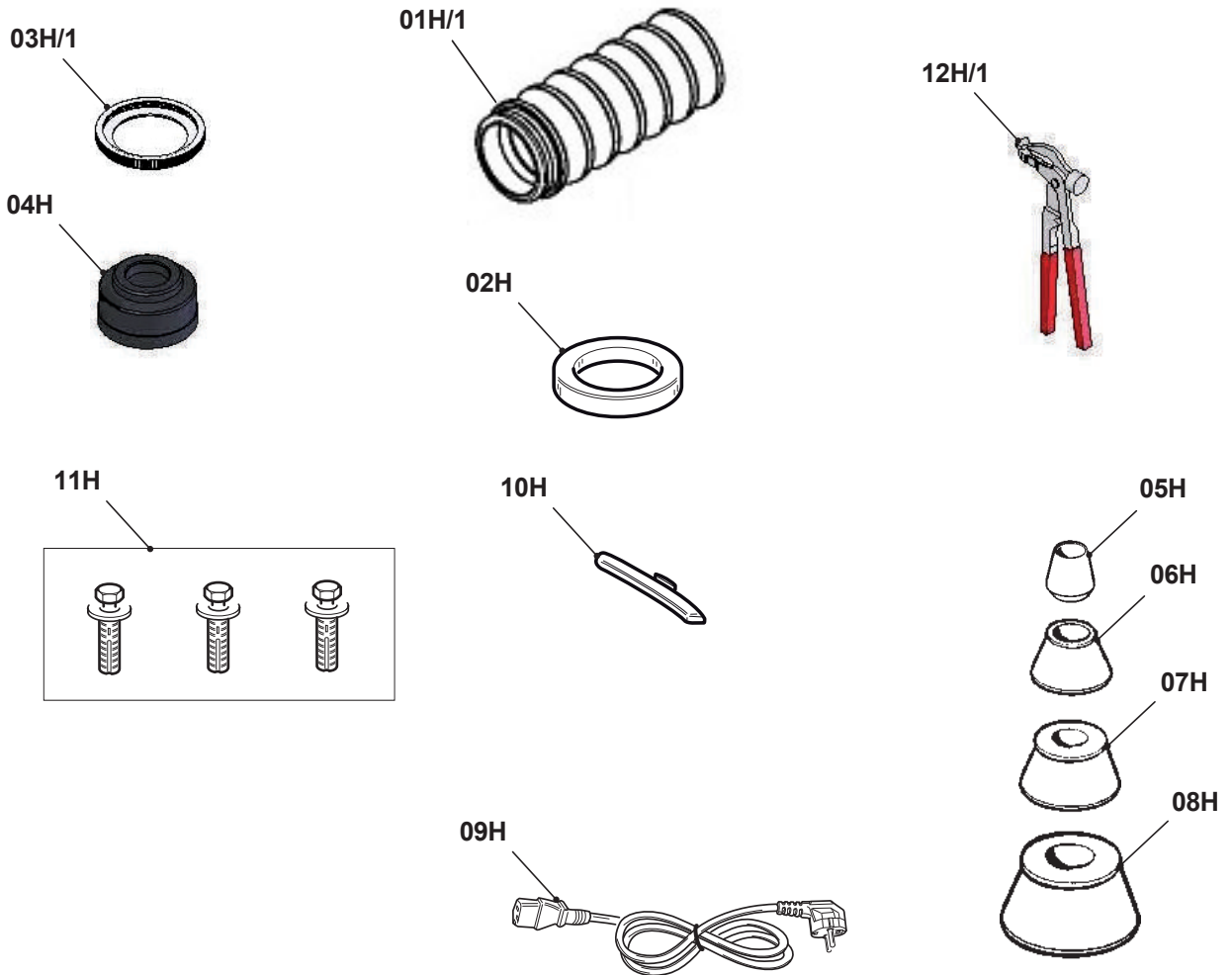


Rif.	Codice	Descrizione	Description	Q.ty
N	41200069	Elettrovalvola 1/8"	Solenoid valve 1/8"	1
O	41200070	Bobina	Coil	1
P	41200071	Connettore	Connector	1
Q	41200247	Zoccolo relè	Relay socket	1
R	41200248	Relè	Relay	1



Rif.	Codice	Descrizione	Description	Q.ty	
01H	21100345	Ghiera M40x4 MEC	Handle	1	
02H	21100348	Cappello	Handle cap	1	
03H	21100344	Protezione calotta	Cap cover	1	
04H	21100343	Calotta	Cap	1	
05H	21100070	Cono Ø42-65 mm.	Ø42-65 mm. Cone	1	
06H	21100015	Cono Ø54-79,5 mm.	Ø54-79,5 mm. Cone	1	
07H	21100016	Cono Ø68-98 mm.	Ø68-98 mm. Cone	1	
08H	21100014	Cono Ø88-132 mm.	Ø88-132 mm. Cone	1	
09H	21200353	Chiave a brugola 12 mm	Key	1	
10H	23200074	Cavo alimentazione corrente	Power supply cable	1	
10H	41200188	Cavo alimentazione corrente CSA	Power supply cable	1	Vers.110V/60Hz
11H	41100080	Peso 50 gr.	50 gr. weight	1	
12H	41100389	Tassello fissaggio	Dowels	3	
13H	21100240	Pinza pesi	Clamp	1	

SOLO con SISTEMA NLS / ONLY with NLS SYSTEM



Rif.	Codice	Descrizione	Description	Q.ty	
01H	21100077	Manicotto NLS	NLS Handle	1	
02H	21100003	Cappello NLS	NLS Handle cap	1	
03H	21200023	Protezione calotta NLS	NLS Cap cover	1	
04H	21100002	Calotta NLS	NLS Cap	1	
05H	21100070	Cono Ø42-65 mm.	Ø42-65 mm. Cone	1	
06H	21100015	Cono Ø54-79,5 mm.	Ø54-79,5 mm. Cone	1	
07H	21100016	Cono Ø68-98 mm.	Ø68-98 mm. Cone	1	
08H	21100014	Cono Ø88-132 mm.	Ø88-132 mm. Cone	1	
09H	23200074	Cavo alimentazione corrente	Power supply cable	1	
10H	41200188	Cavo alimentazione corrente CSA	Power supply cable	1	Vers.110V/60Hz
10H	41100080	Peso 50 gr.	50 gr. weight	1	
11H	41100389	Tassello fissaggio	Dowels	3	
12H	21100240	Pinza pesi	Clamp	1	



CORMACH S.r.l.

via Mons. Pignedoli, 2
42015 CORREGGIO (RE) ITALY
Tel. +39 0522 631274 - Fax +39 0522 631284
e-mail: cormach@cormachsrl.com
www.cormachsrl.com

